



Connectors > Circular Connectors > Circular Connector Accessories > Circular Connector Adapters

Features

Product Type Features

Product Type	Accessory
Accessory Type	Adapter

Body Features

Connector Color	Black
-----------------	-------

Other

Adapter Type	Straight
--------------	----------

Product Compliance

[For compliance documentation, visit the product page on TE.com>](#)

EU RoHS Directive 2011/65/EU	Not Yet Reviewed
EU ELV Directive 2000/53/EC	Compliant
China RoHS 2 Directive MIIT Order No 32, 2016	No Restricted Materials Above Threshold
EU REACH Regulation (EC) No. 1907/2006	Current ECHA Candidate List: JUN 2020 (209) Candidate List Declared Against: JUN 2016 (169) Does not contain REACH SVHC
Halogen Content	Low Halogen - Br, Cl, F, I < 900 ppm per homogenous material. Also BFR/CFR/PVC Free
Solder Process Capability	Not applicable for solder process capability

Product Compliance Disclaimer

This information is provided based on reasonable inquiry of our suppliers and represents our current actual knowledge based on the information they provided. This information is subject to change. The part numbers that TE has identified as EU RoHS compliant have a maximum concentration of 0.1% by weight in homogenous materials for lead, hexavalent chromium, mercury, PBB, PBDE, DBP, BBP, DEHP, DIBP, and 0.01% for cadmium, or qualify for an exemption to these limits as defined in the Annexes of Directive 2011/65/EU (RoHS2). Finished electrical and electronic equipment products will be CE marked as required by Directive 2011/65/EU. Components may not be CE marked. Additionally, the part numbers that TE has identified as EU ELV compliant have a maximum concentration of 0.1% by weight in homogenous materials for lead, hexavalent chromium, and mercury, and 0.01% for cadmium, or qualify for an exemption to these limits as defined in the Annexes of Directive 2000/53/EC (ELV). Regarding the REACH Regulation, the information TE provides

on SVHC in articles for this part number is based on the latest European Chemicals Agency (ECHA) 'Guidance on requirements for substances in articles' posted at this URL: <https://echa.europa.eu/guidance-documents/guidance-on-reach>

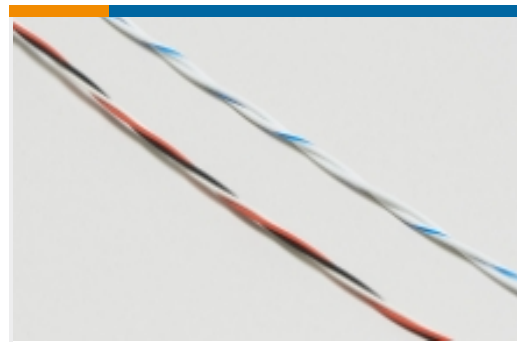
Also in the Series | Series HC26



Circular Connector Contact Inserts(5)

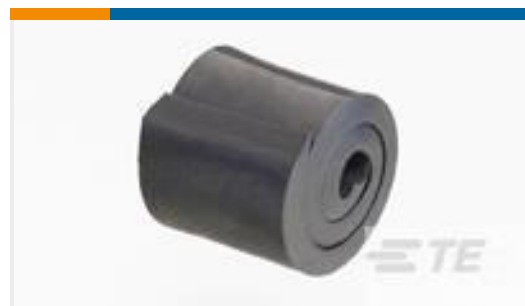


Circular Power Connectors(2)



Twisted Pair Cable(1)

Customers Also Bought



TE Model / Part #CS9491-000
SEB-B



TE Model / Part #1571218-3
TACT,SMT,12X12,SEALED,T&R



TE Model / Part #8503234003
STD OEG Miniature PCB PCH Power Relays



TE Model / Part #Y5015-000000078021
90 ELBOW HEATSHRINK ADAPT. - TYPE ECHSA



TE Model / Part #Y5015-000000078019
STRAIGHT ADAPTER HEATSHRINK - TYPE SCHA



TE Model / Part #CB5385-000
SST-48-20/FR/97



TE Model / Part #1219034002
MT2000-10.0-0-SP



TE Model / Part #CS9490-000
SEB-A



TE Model / Part #CS9494-000
SEB-E

Documents

[CAD Files](#)

[3D PDF](#)

[3D](#)



Customer View Model

[ENG_CVM_CVM_2287892-1_A.2d_dxf.zip](#)

English

Customer View Model

[ENG_CVM_CVM_2287892-1_A.3d_igs.zip](#)

English

Customer View Model

[ENG_CVM_CVM_2287892-1_A.3d_stp.zip](#)

English

By downloading the CAD file I accept and agree to the [Terms and Conditions](#) of use.

Datasheets & Catalog Pages

[Circular Hybrid Connectors](#)

English